

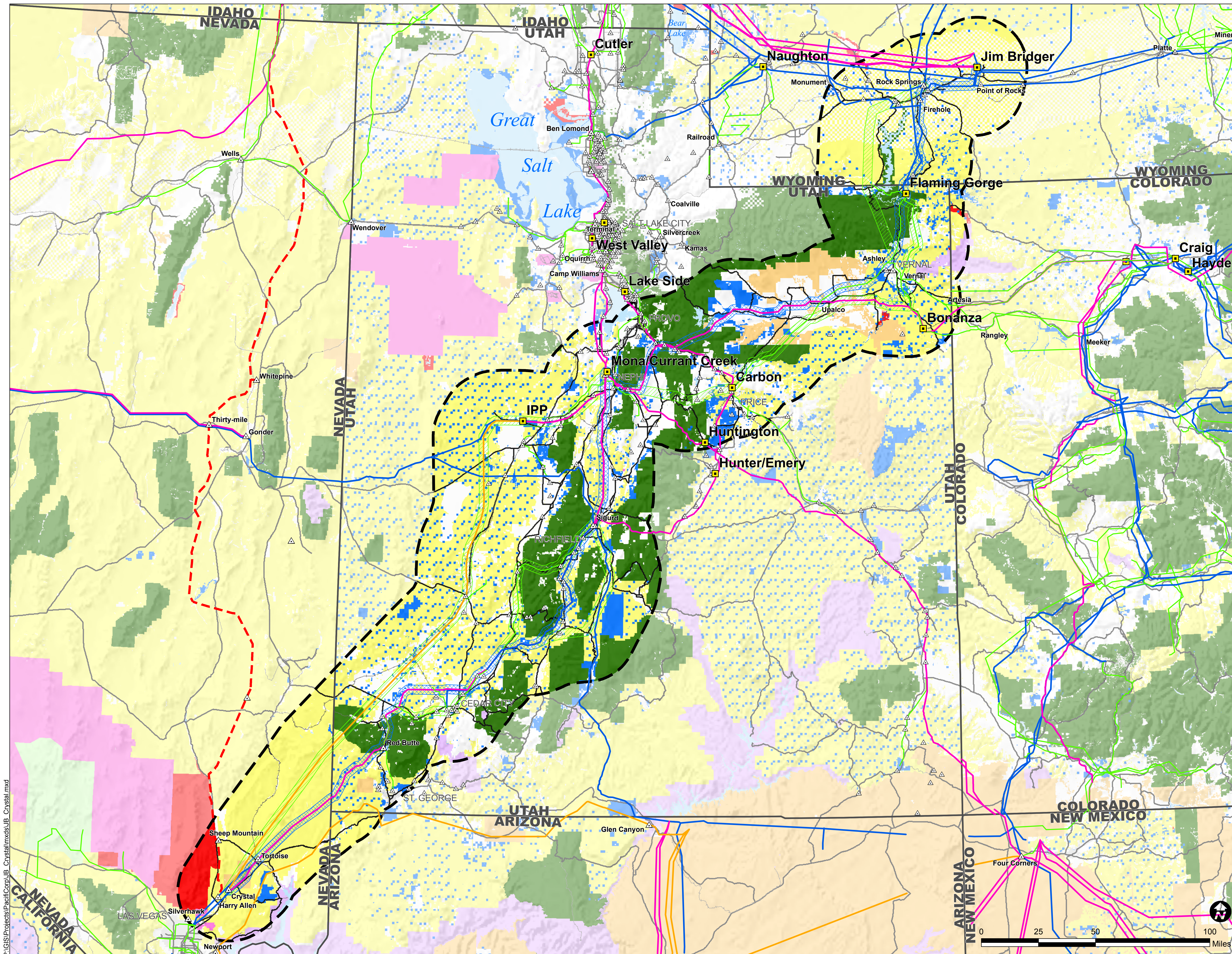
Proposed Study Area
**JIM BRIDGER TO CRYSTAL
500kV TRANSMISSION
PROJECT**
DRAFT

Legend

- Preliminary Proposed Corridors
- Preliminary Alternate Corridors
- Bureau of Land Management
- Bureau of Indian Affairs
- U.S. Forest Service
- National Park Service
- U.S. Fish & Wildlife Service
- Department of Defense
- Department of Energy
- State Land
- Private
- Urban

General Reference Features

- Proposed Study Area Boundary
- Southwest Intertie Project (SWIP) 500kV Corridor
- 500kV Transmission Line
- 345kV Transmission Line
- 230kV Transmission Line
- 115/138kV Transmission Line
- Major Highway
- Major Road
- Railroad
- Power Plant
- Substation
- Future Substation



April 19, 2007

SOURCES:
Land Ownership, AGRC/Idaho DWR/U of Wyoming, Colorado BLM;
Transmission Lines and Substations, PacifiCorp

NOTE:
Transmission systems and substation locations are schematic
and do not necessarily represent accurate locations.